
MAJEXTANDM

— Installation and Operating instruction —

1. About Majextand M

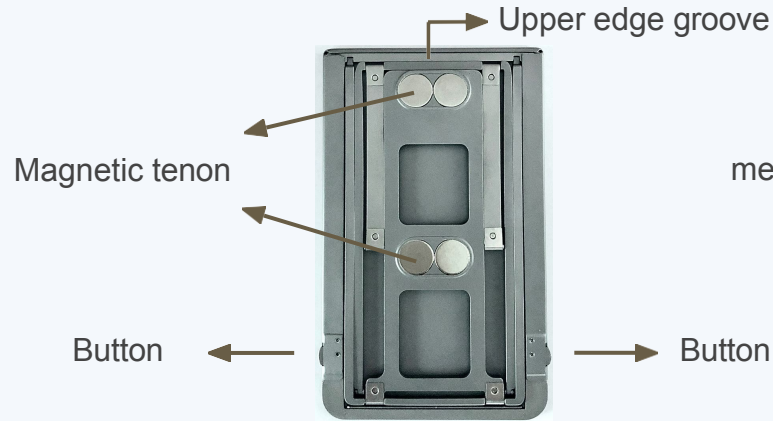
■ Contains:

1 Majextand M, 1 adhesive docking sheet

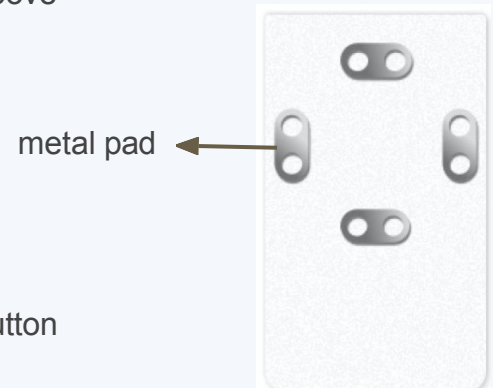
■ Front



■ Back



■ Adhesive docking sheet



2. Specifications:

☐ Specifications:

| **Origin** 100% in Taiwan

| **Dimension** 105mm x 63.5mm

| **Materials** Stainless steel SUS#301/304/420

| **Weight** 75g

| **Thickness** 2.3mm

☐ Compatibility:

→ Majextand M can lift up any mobile device lighter than

600g.

→ The Majextand M adhesive docking sheet can be applied to

the hard materials and flat surfaces like glass, metal, PC,...

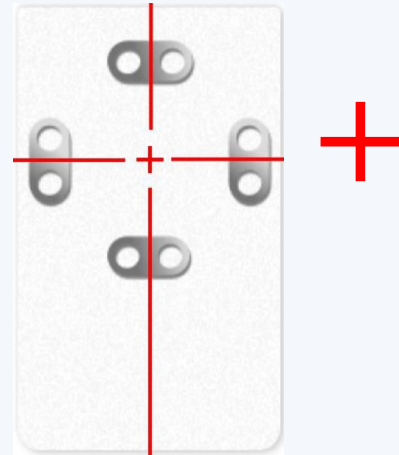
. We don't recommend applying it to curved, uneven

textured surfaces or soft materials like silicone or rubber

phone cases.

3. Majextand M adhesive docking sheet installation notes

1. Wipe the device's surface by using an **alcohol pad**.
2. Align the center of the four metal pads and **target the center** of the device or phone case.



3. Applying sequence (1):
From top to bottom, set the adhesive docking sheet at the center of the device.



4. Applying sequence (2):
Squeeze the bubble from the center to the edge.



5. Make sure that there is **no bubble between adhesive docking sheet and the device** to complete the installation.



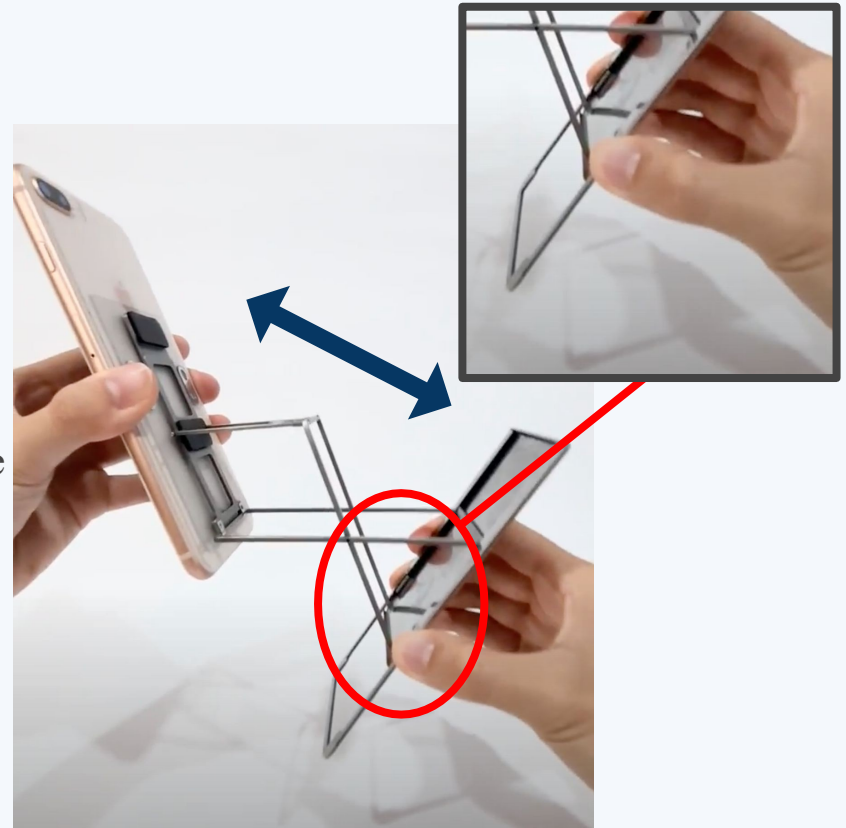
4. Operating instruction

1. Please attach Majextand M onto the **adhesive docking sheet's metal pads**, align gently until both parts be jointed.
2. Put the forefinger on the upper edge groove Majextand M base and pull.

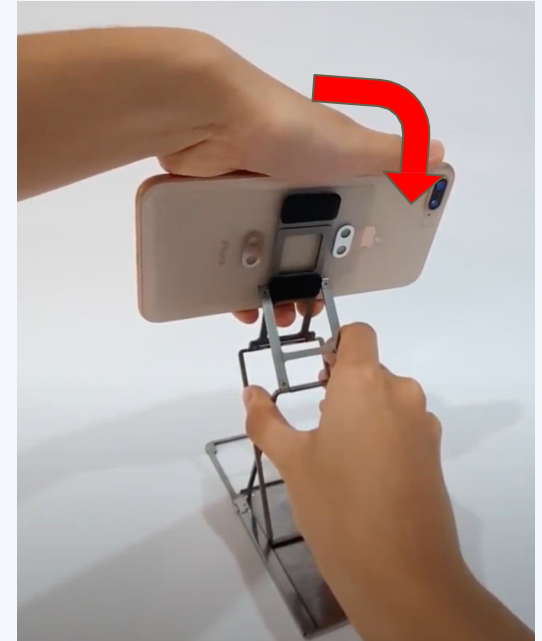


3. **Press the buttons on both sides** to adjust the angle of Majextand M.

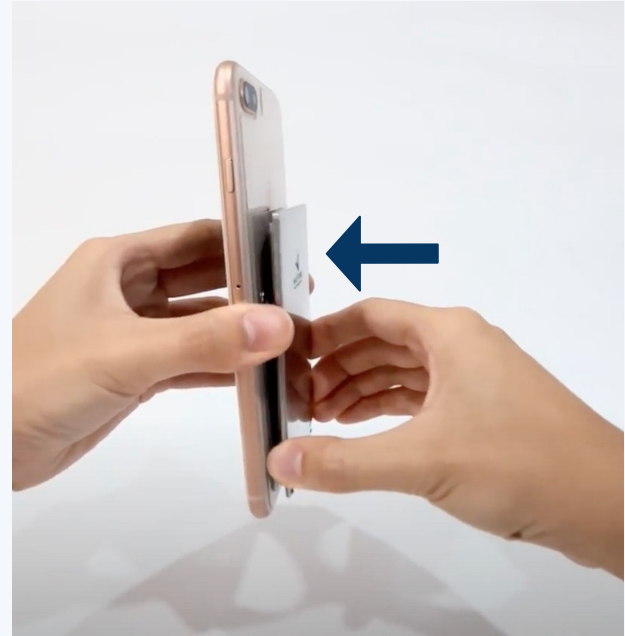
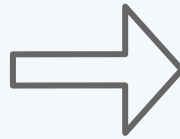
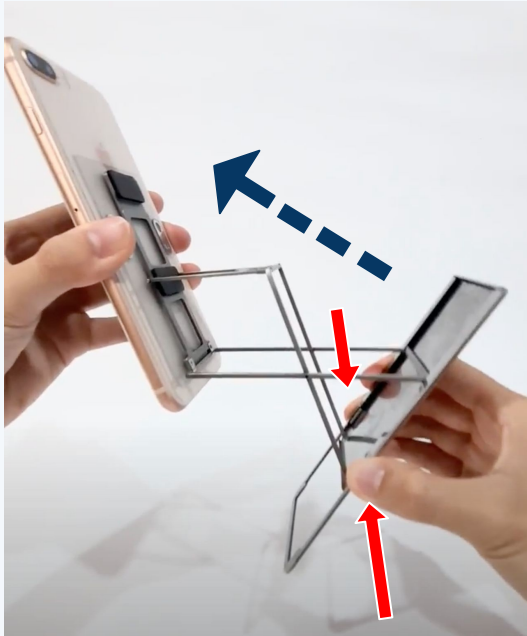
* Reminder : When adjusting Majextand M,
please be careful.



4. Remove the device from Majextand M to switch the horizontal and vertical.



5. Press the buttons on both sides to close the Majextand M.



* Reminder : When closing Majextand M, please move it slowly and be careful.