
MAJEXTAND M

— Installation and Operating instruction —

1. About Majextand M

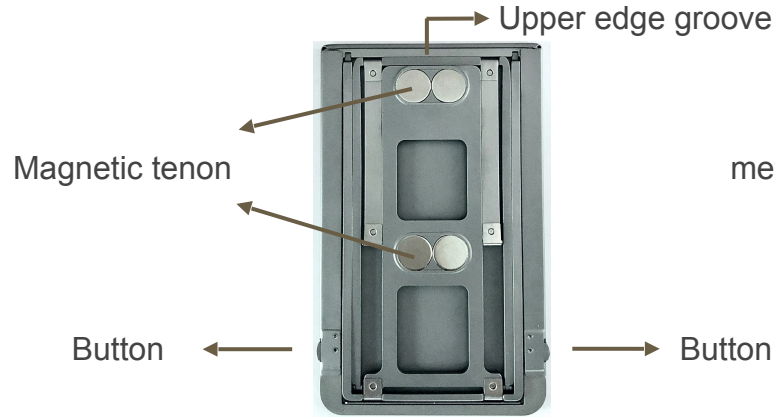
❑ Contains:

1 Majextand M, 1 adhesive docking sheet

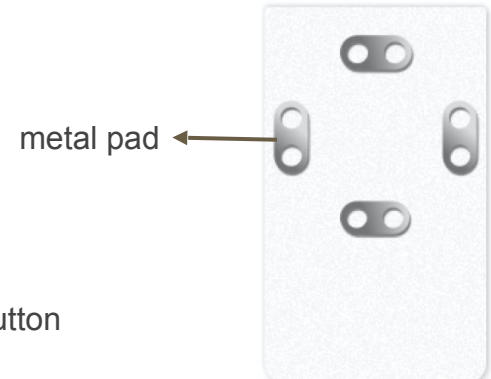
■ Front



■ Back



■ Adhesive docking sheet



2. Specifications:

❑ Specifications:

| **Origin** 100% in Taiwan

| **Dimension** 105mm x 63.5mm

| **Materials** Stainless steel SUS#301/304/420

| **Weight** 75g (Docking Sheet Included)

| **Thickness** 2.3mm

❑ Caution :

| Majextand M is not for children under the age of seven (7).

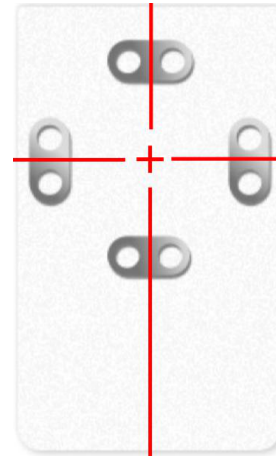
| This product contains magnets. Please stay away from **Heart rate regulators, Insulin pumps, Credit cards, Compasses or Precision instruments & objects** that are easily affected by magnetism. Besides, it may affects the function of some sensitive accessories, e.g., **Samsung S Pen, EMR Pen** etc., which need to detach the Majextand M before using them on the phones or tablets.

❑ Compatibility:

- Majextand M can fit on the device(with or without its case) which is lighter than 500 grams, and the stickable area is longer than 4” and wider than 2.4”.
- The Majextand M adhesive docking sheet can be applied to the hard materials and flat surfaces like glass, metal, PC,... . We don't recommend applying it to curved, uneven textured surfaces or soft materials like silicone or rubber phone cases.

3. Majextand M adhesive docking sheet installation notes

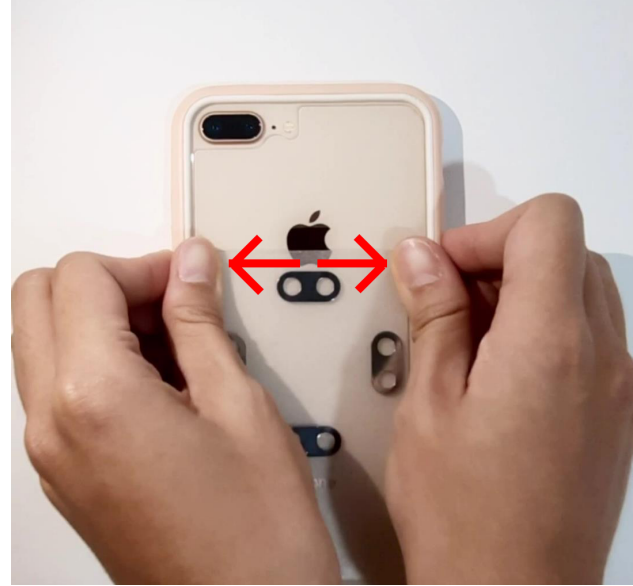
1. Wipe the device's surface by using an alcohol pad.
2. Align the center of the four metal pads and target the center of the device or phone case.



3. Applying sequence (1):
From top to bottom, set the adhesive docking sheet at the center of the device.



4. Applying sequence (2):
Squeeze the bubble from the center to the edge.

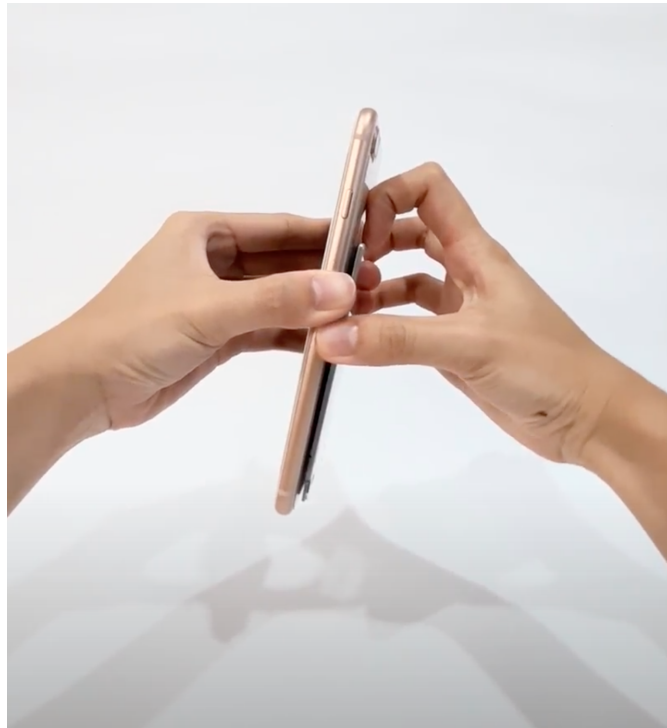


5. Make sure that there is **no bubble between adhesive docking sheet and the device** to complete the installation.



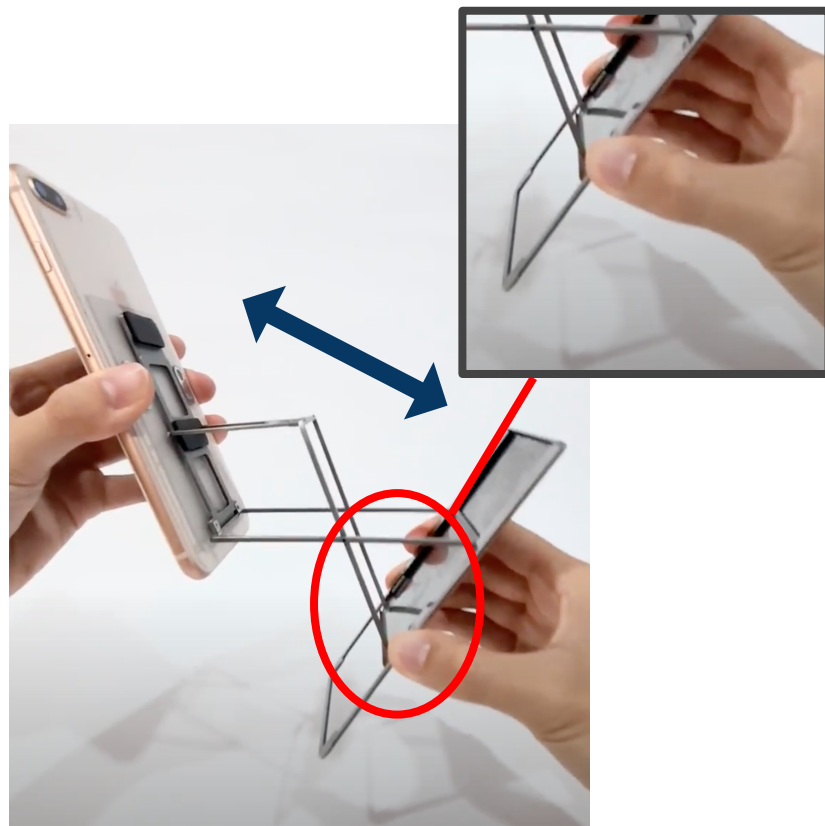
4. Operating instruction

1. Please attach Majextand M onto the **adhesive docking sheet's metal pads**, align gently until both parts be jointed.
2. Put the forefinger on the upper edge groove Majextand M base and pull.

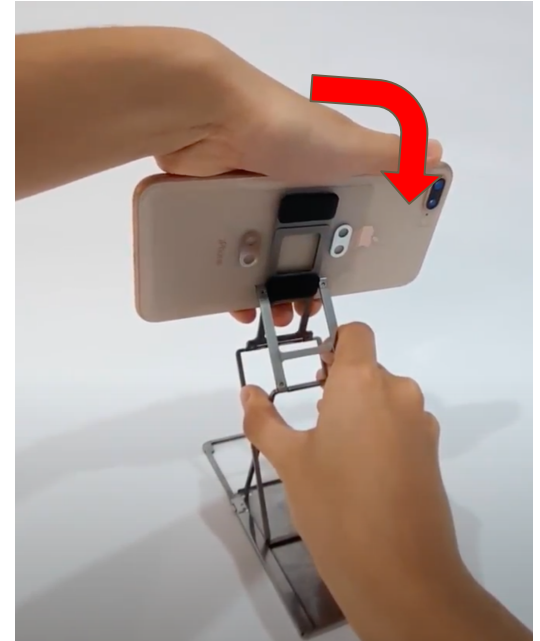


3. **Press the buttons on both sides** to adjust the angle of Majextand M.

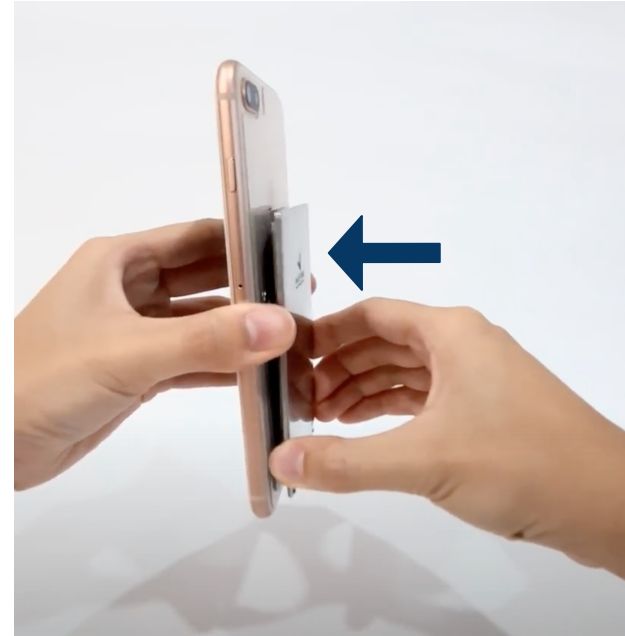
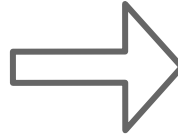
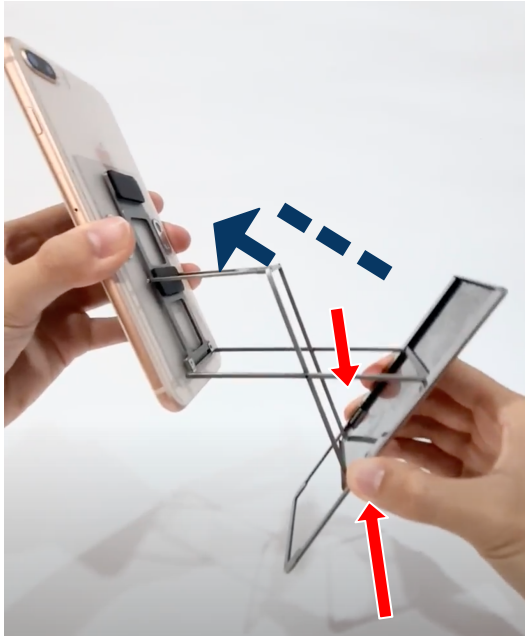
★ Reminder : When adjusting Majextand M, please be careful.



4. Remove the device from Majextand M to switch the horizontal and vertical.



5. Press the buttons on both sides to close the Majextand M.



* Reminder : When closing Majextand M, please move it slowly and be careful.